

# Model. MaxPro Load Cell

## Description

**Capacities: (E<sub>max</sub>)**  
10,20,30,40,50

**Rated out put:**  
2.0mV/V  
Digital:1,000,000d

**Accuracy:**  
C3 OIML R60

**Material of elastomer:**  
Alloy steel or stainless steel

**Execution standard:**  
GB/T 7551-1997 Certificatd  
(eqv OIML R60)  
Combined error:0.015%

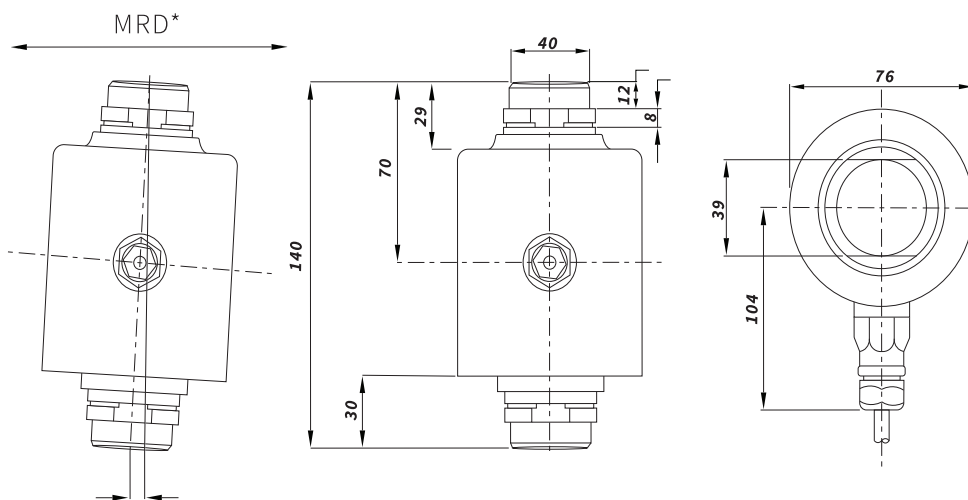
**Sealed to IEC 529:**  
Protection grade: IP67 or IP68.  
Protection against total immersion  
in water for 30 minutes at a pressure  
corresponding to a 1 m head of water.



Stainless steel Braided Cable Length 16 M

## Dimensions

(In mm. 1mm. = 0.03937 inches)



Type	H1	H2	H3	H4	H5	H6	H7	H8	D1	D2	S <sub>max</sub> **	RF**	S <sub>nom</sub> **
30t	140	70	26	28	13	6.5	39	84	39	81	10.5	34 KN	0.29
40t	150	75	31	33		11.7					10	37 KN	0.8

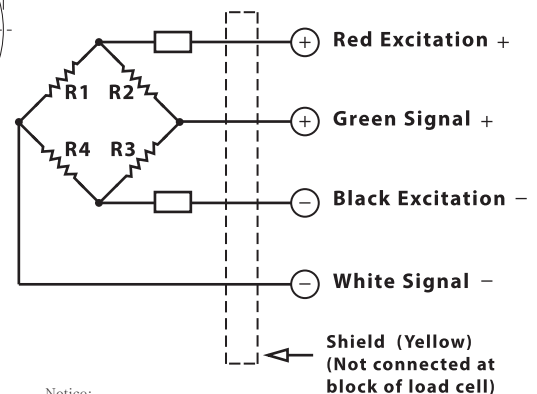
## Specification

Item Parameter	C3	Unit
Rated load (E <sub>max</sub> ):	30,40,50,	t
Maximal numbers of load cell verification Intervals (Nlc):	3000	d
Minimum load cell verification intervals Intervals (Vmin):	E <sub>max</sub> /15,000	% of rated load
Rated output (Cn):	2.0 ± 0.1%	mV/V
*Combined error:	± 0.0200	± % of rated output
Temperature effect on sensivity (Tky):	± 0.0093	±% of rated output/ °C
Temperature effect on zero balance(Tk0):	0.0008	± % of rated output/°C
Zero balance:	± 5	± % of rated output
Input resistance(RlC):	1,150 ± 50	Ω (Ohms)
Output resistance (Ro) :	1,000 ± 2	Ω (Ohms)
Insulation resistance:	≥ 5000	MΩ (Mega-Ohms)
Safe overload:	150	% of rated cpability
Ultimate overload:	300	% of rated cpability
Operating temperature range:	-40~+80(ATEX-40~+60)	°C / °F
Recommend excitation:	8~15	V( DC or AC )
Maximum excitation:	24	V( DC or AC )
Material of elastomer:	Alloy steel / Stainless steel	
Protection class:	IP67/IP68	

The data for deviation of synthesis error, TKO,TKc are typicl values. The sum of these data meets the requirements according to OIML R60

## Circuit Diagram

Electrical Termination  
4 Core cable standard lengths:  
<=30t: 12.0m, >=40t: 16m  
Diameter:φ6  
Connection:  
Refer to the following drawing:



Notice:  
Do not change the length of cable, or lese,  
it will effect the sensitivity of load cell.

## Circuit Diagram

### Modifications reserved

All details describe our products in general from only.

They are not to be understood as express warranty and do not constitute liability whatsoever.

The company reserves the right to make amendments to this datasheet information without prior notice.

No part of this datasheet, including the texts, photographs, may be reproduced or transmitted without the express written permission of Brano Tech Co.,Ltd.



**BRANO TECH CO., LTD**

Tel: 0815507960  
Call : 02-2744623  
Fax : 02-2744629  
Web : www.branotec.com