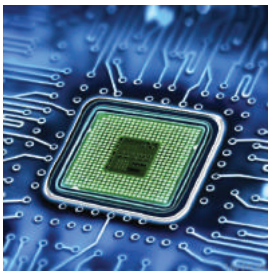


BR030SD Digital Load Cells

New generation heavy-capacity weighing



Reliable, Durable, Highly Precise

- In-built Hybrid Processor
- Secure, fast and correct digital output signal (RS 485)
- The fully welded stainless steel structure, hermetically sealed, IP68 protection
- Heavy-duty, water resist cables protected by braided stainless steel sheathing
- Advanced A/D converter and low power
- Self-aligning suspension, stainless steel upper and lower receivers
- Direct replacement without calibration for non-legal for trade scales



Easy and Fast Maintenance

- Easy and fast scale setup
- Electronic calibration & corner adjustment
- Fast fault finding, monitors performance, detects problems, and simplifies service
- Eliminated spoiling influences
- Standard Lightning & Surge Voltage Protection
- Operates with intelligent weight indicator or terminals for advanced applications
- Up to 24 digital load cell network



BAYKON BR030SD digital load cells are designed to use mainly for vehicle scales and similar heavy-capacity weighing applications. It is a compression type load cell with an integral rocker-pin design that automatically aligns load forces for accurate weighing. With its stainless steel, IP68 hermetically sealed enclosure, it can be used safely in harsh environments.

BAYKON BR030SD digital load cells provide fast and effective service opportunity with technologic design structure. Those digital load cells; eliminate possible errors which can occur with standard analogue load cell scales such as temperature, nonlinearity, hysteresis, electromagnetic effects and voltage variation. Weighing is blocked in case of load cell is broken.

Its advanced electronic design provide high resolution and long term stable digital output signal for accurate and reliable measurement. BR030SD digital load cells are matched at the production which provides direct replacement without calibration with test weights for non-legal scales.

BAYKON
Industrial Weighing Systems

Fast service, low maintenance cost, high precision and reliability...

BAYKON Model BR030SD digital load cells have high protection structures and intelligent microprocessors integrated into them and represent the latest in weighing technology, high accuracy and reliability along. They have been designed to use for many years with all their superior features without any problems and are ideal for trucks and rail weighbridges and similar heavy capacity scale applications.

Full Protection

- ✓ 100 % Stainless steel, IP68 structure
- ✓ Hermetically sealed and laser-welded ensure
- ✓ Physical damage resistant



Simplify Maintenance

- ✓ Easy and fast error detection
- ✓ Smart Electronic calibration and corner adjust
- ✓ Unmatched Value (Factory default calibration)

Eliminated Spoiling Influences

- ✓ Temperature
- ✓ Voltage variation
- ✓ Non-linearity
- ✓ Hysteresis
- ✓ Instability
- ✓ Electromagnetic effects
- ✓ Zero and sensitivity change

Strong Weight Signal

- ✓ Heavy-duty and water resist cables protected by braided stainless steel sheathing
- ✓ Safe connecting with fixed outlet watertight connector
- ✓ Secure, fast and correct communication

Best Load Transfer

- ✓ Self-aligning suspension
- ✓ Stainless steel upper and lower receivers
- ✓ Debris retarding rubber boot

Connection to Intelligent Terminals

- ✓ European/OIML Approval
- ✓ Monitors performance, detects problems and simplifies service
- ✓ Easy scale setup and calibration
- ✓ Lightning & Surge Voltage Protection
- ✓ Alibi memory
- ✓ Excellent weighing functions
- ✓ Advanced applications such as truck scale, labelling, data collecting etc

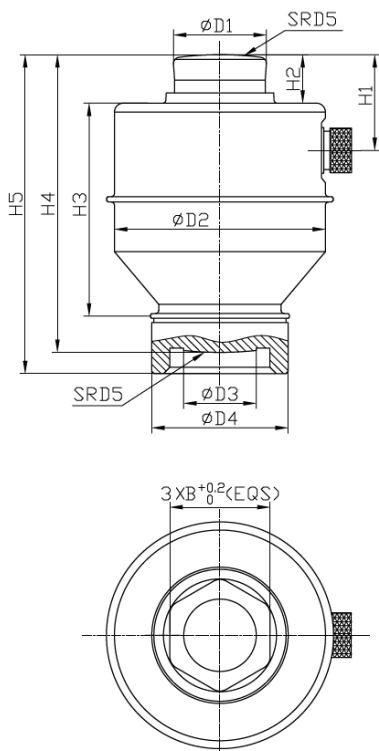


Technical Specifications

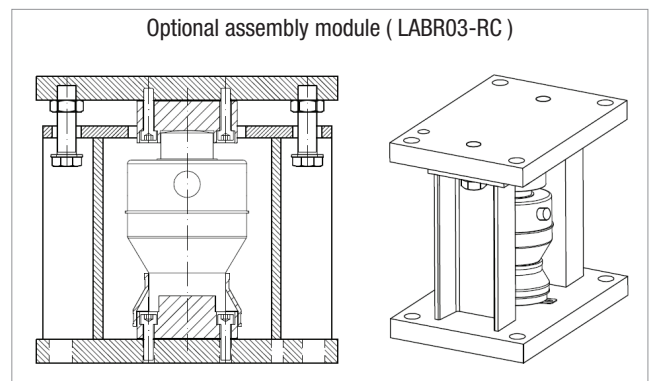
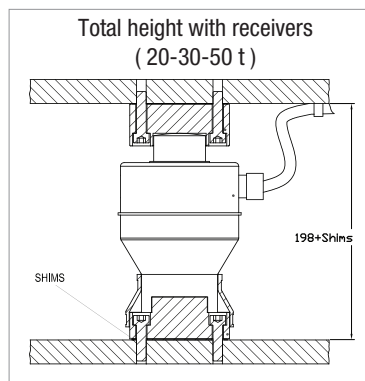
| | | |
|--|---------------|--|
| Maximum capacity (R.C.) | t | 20 / 30 / 50 / 100* |
| Accuracy class according to OIML R60 | | C3 |
| Minimum dead load | kg | 20 |
| Maximum number of verification intervals (nLC) | | 5000 |
| Minimum load cell verification interval (Y) | | 10000 |
| Fraction factor | pLC | 0.8 |
| Linearity | ppm R.C. | < ± 110 |
| Hysteresis | ppm R.C. | < ± 180 |
| Combined error | ppm R.C. | < ± 300 |
| Temperature effect on zero | ppm R.C./°C | < ± 140 |
| Temperature effect on span | ppm R.C./°C | < ± 17 |
| Internal resolution | Counts @ R.C. | ≥ 6000000 |
| External resolution | Counts @ R.C. | ≥ 50000 |
| Safe load limit | % R.C. | 150 |
| Ultimate load | % R.C. | 300 |
| Zero balance | % R.C. | < ± 1 |
| Zero Return, 30 min. | ppm R.C. | < ± 180 |
| Excitation, recommended | V DC | 10 |
| Excitation, maximum | V DC | 18 |
| Insulation impedance | MΩ | ≥ 5000 |
| Temperature range, compensated | °C | -10... + 40 |
| Temperature range, operating | °C | - 40... + 80 |
| Construction | | Stainless steel, Hermetically welded |
| Environmental protection | | IP68, IP69K |
| Cable | | Stainless steel sheathing, Fixed outlet, length 16m, dia 8mm |
| Package size & weight | | 380 x 320 x 190 mm - 7,5 kg |

*Contact Factory

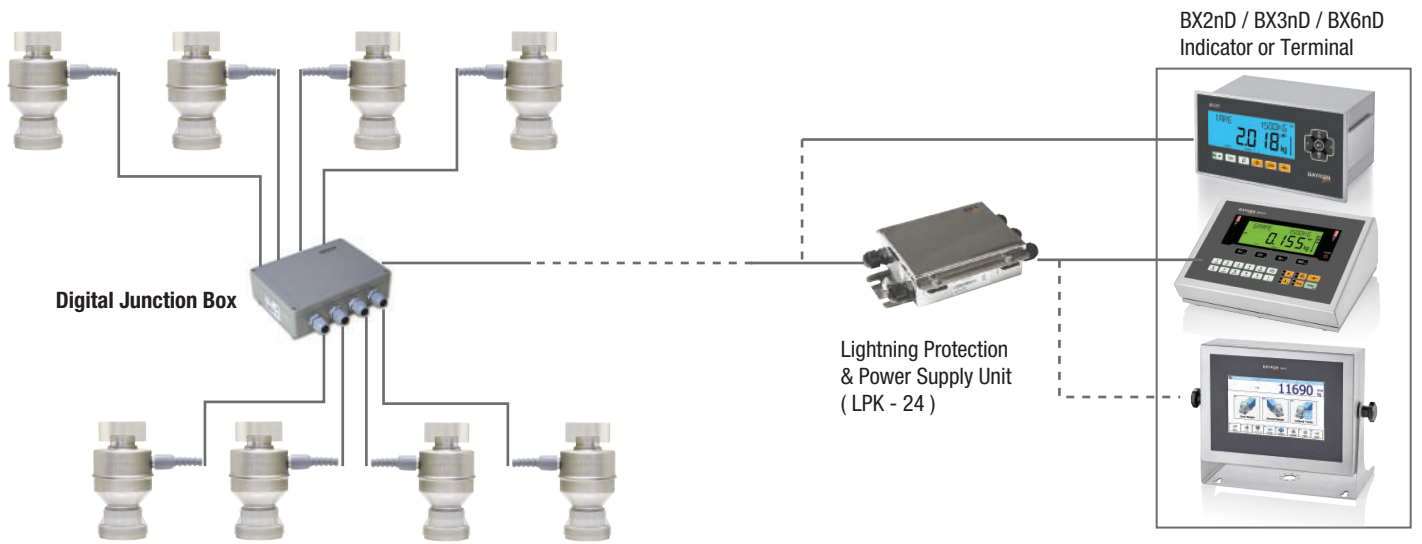
Dimensions (mm)



| (mm) | B | D1 | D2 | D3 | D4 | D5 | H1 | H2 | H3 | H4 | H5 |
|------------|----|------|-----|----|----|-----|----|----|-----|-----|-----|
| Load (t) | | | | | | | | | | | |
| 20 | 47 | 43.6 | 99 | 34 | 64 | 150 | 45 | 23 | 100 | 140 | 150 |
| 30 | 47 | 43.6 | 99 | 34 | 64 | 160 | 45 | 23 | 100 | 140 | 150 |
| 50 | 47 | 43.6 | 99 | 34 | 64 | 200 | 45 | 23 | 100 | 140 | 150 |
| 100 | 70 | 70 | 159 | 56 | 86 | 300 | 65 | 30 | 130 | 185 | 200 |



Typical Application



Order Codes

| Component | Quantity of Each Component in Each Load Cell Kit | | |
|--|---|-----------------|-----------------|
| | BR030K4-RC | BR030K6-RC | BR030K8-RC |
| Load Cell | 4 | 6 | 8 |
| Upper receiver | 4 | 6 | 8 |
| Lower receiver | 4 | 6 | 8 |
| Debris shield | 4 | 6 | 8 |
| Ground cable (300 mm) | 4 | 6 | 8 |
| Shims (Two thicknesses) | 8 | 12 | 16 |
| Digital junction box | 1 (BDS04) | 1 (BDS08) | |
| Home run cable | 1 (Must be ordered separately, BLCC-S) | | |
| Weight indicator or terminal | 1 (Must be ordered separately, BX2nD / BX3nD / BX6nD) | | |
| LPK-24 lightning protection & power | 1 (Must be ordered with the terminal) | | |
| Assembly module (Optional and ordered separately) | 4 (LABR03-RC) | 6 (LABR03-RC) | 8 (LABR03-RC) |

RC : Rated Capacity (20, 30, 50, 100 t)